

POPULATION CENSUS RESULT 2020

Official News Statistic No. 07/01/Yr. XXIV, 21 January 2021

Indonesian Population SP2020 Result (September 2020)

270,20 Million People

An increase of 32.56 million people compared to SP2010

Population Growth Rate per Year 2010-2020

1,25%

Slowing down compared to the period 2000-2010 was **1,49%**

Productive Age Population (15-64) Years

70,72%

Indonesia is still in the demographic bonus period

Percentage of Elderly Population

9,78%

An increase compared to 2010 which was **7,59%**



Gender Ratio

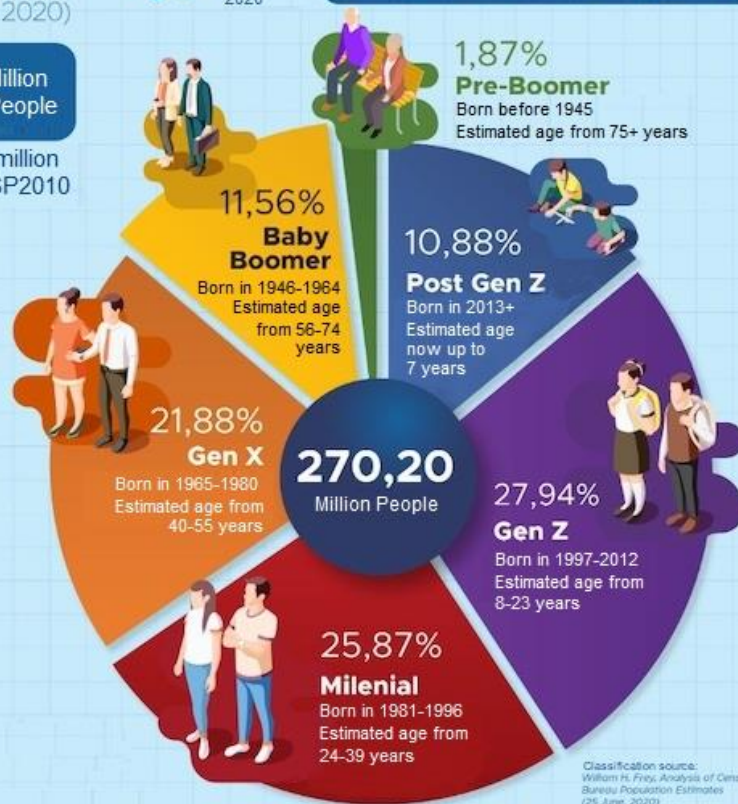
102

There are 102 males for every 100 females



Population Census 2020

Indonesian Population Composition



Classification source: Willem H. Frey, Analysis of Census Bureau Population Estimates (25 June, 2020)

Distribution of Indonesian Population by Region

Indonesian population is still concentrated on the island of Java

With an area of 7% of Indonesia's territory, Java Island is inhabited by 151.59 million people or 56.10% of Indonesia's population



FEATURING:

ASEAN CONFERENCE 2022

SURYO PRATOMO
Singapore, 23 March 2022

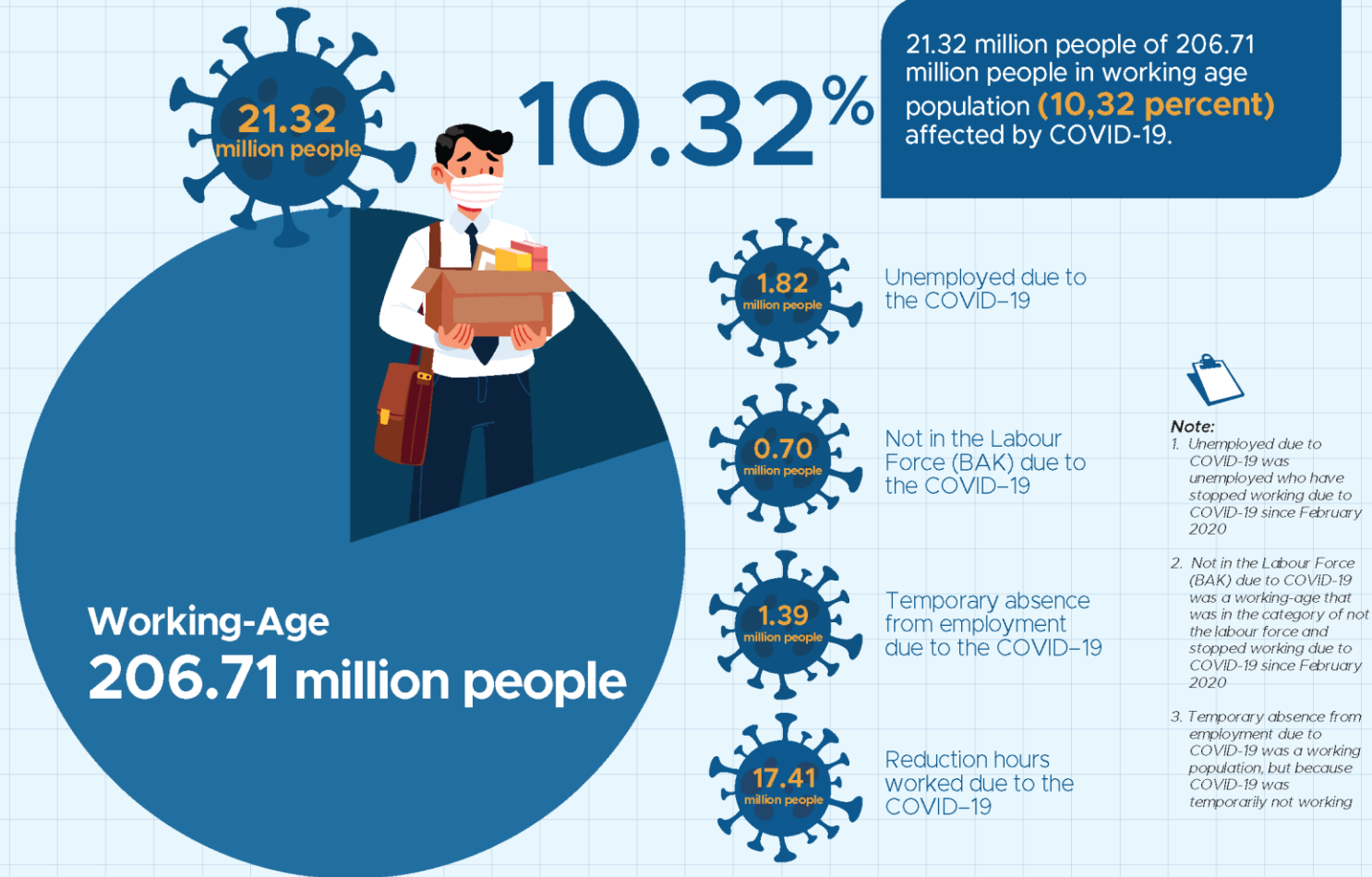
LABOUR SITUATION IN INDONESIA, AUGUST 2021

Official Statistics News No.84/11/Th. XXIV, November 5th, 2021



FEATURING:

ASEAN CONFERENCE 2022



Note:

1. Unemployed due to COVID-19 was unemployed who have stopped working due to COVID-19 since February 2020
2. Not in the Labour Force (BAK) due to COVID-19 was a working-age that was in the category of not the labour force and stopped working due to COVID-19 since February 2020
3. Temporary absence from employment due to COVID-19 was a working population, but because COVID-19 was temporarily not working

SURYO PRATOMO

Singapore, 23 March 2022